

MONTHLY MEMBERSHIP PROGRESS REPORT

District 325 I

Results as of: 5/31/2026

GMT:

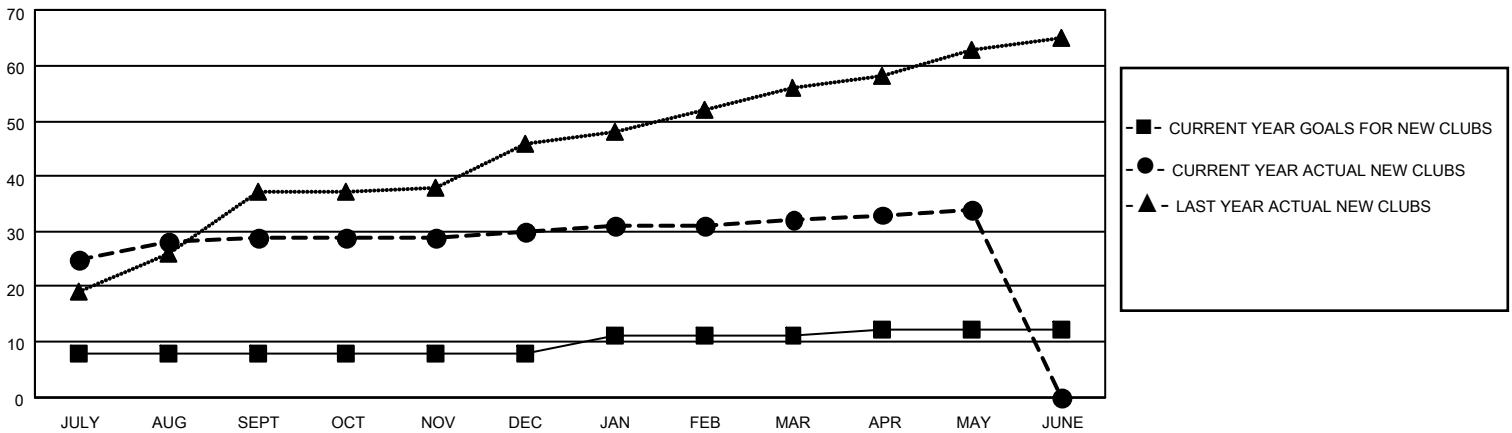
LOCATION NEPAL

GMT CA

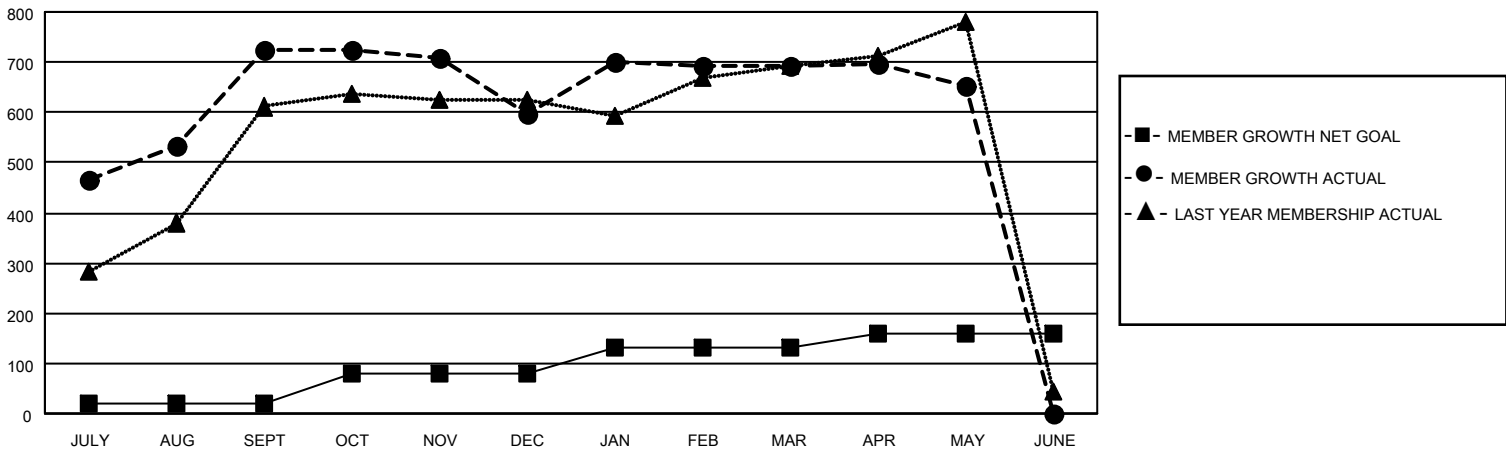
Clubs			
RESULTS FOR 2025-2026			
QUARTER	NEW CLUB GOAL	NEW CLUBS	DROPPED CLUBS
JULY/AUG/SEPT	8	29	2
OCT/NOV/DEC	0	1	1
JAN/FEB/MAR	3	2	0
APR/MAY/JUNE	1	2	0

Members			
RESULTS FOR 2025-2026			
QUARTER	MEMBER GROWTH NET GOAL	MEMBER GROWTH ACTUAL	DROPPED MEMBERS ACTUAL (including transfers)
JULY/AUG/SEPT	20	948	196
OCT/NOV/DEC	60	127	224
JAN/FEB/MAR	50	166	56
APR/MAY/JUNE	30	89	112

GOALS AND ACTUAL NEW CLUBS CUMULATIVE



GOALS AND ACTUAL MEMBERS CUMULATIVE



DROPPED CLUBS: 3	142 CLUBS OF 277 ADDED 1 OR MORE NEW MEMBERS	<u>GENDER DISTRIBUTION</u>	
<u>DROPPED MEMBERS</u>		MALE	3,469 (65.07%)
DECEASED	3	FEMALE	1,864 (34.97%)
CLUB CANCELLED	5	TOTAL FAMILY UNIT MEMBERS 4,966	
OTHER	572		
TOTAL	580		
CLICK HERE FOR CUMULATIVE MEMBERSHIP DATA		TOTAL FAMILY UNIT MEMBERS 4,966	
		FAMILY MEMBERS PAYING HALF DUES 3,825	